

# SPEC SHEET + MEASUREMENTS



## Nike Track Jacket. NKFQ4758

### Product photo



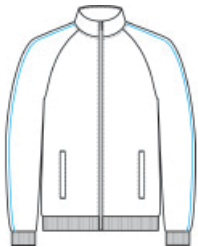
With dual white piping down the sleeves on all colors, this track jacket is a Nike icon.

- 8.7-ounce, 100% polyester
- Zip-through cadet collar
- Dyed-to-match zipper
- Dyed-to-match zippered front pockets
- Contrast embroidered Swoosh logo is on the center back, below the collar

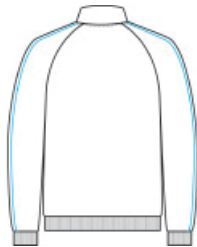
### CARE INSTRUCTIONS

Wash Inside Out. Wash With Like Colors. Fasten All Closures To Wash And Dry. Do Not Use Softeners. Do Not Allow To Lay On Itself When Wet. Remove Immediately.

### Sketches



front



back

# SPEC SHEET + MEASUREMENTS



## Nike Track Jacket. NKFQ4758

### PRODUCT MEASUREMENTS

	XS	S	M	L	XL	2XL	3XL	4XL
Body Length at Back	26 3/8	26 3/4	27 1/8	27 7/8	28 3/4	29 1/2	30 1/4	31 1/8
Chest	19 5/8	21 1/4	22 3/4	26 1/8	27 3/8	28 3/8	30 1/2	32 1/4
Raglans and Dolmans Sleeve Length	34 1/2	35	35 1/4	36 1/4	37	37 3/4	38 1/4	39 1/4

**Body Length at Back:** Measured from high point shoulder to finished hem at back.

**Chest:** Measured across the chest one inch below armhole when laid flat.

**Raglans and Dolmans Sleeve Length:** Measure from neck edge to finished hem.

### SIZE CHARTS

	XS	S	M	L	XL	2XL	3XL	4XL
Chest	32-35	35-37 1/2	37 1/2-41	41-44	44-48 1/2	48 1/2 -53 1/2	53 1/2 - 58	58-63

# SPEC SHEET + MEASUREMENTS



Nike Track Jacket. NKFQ4758

## HOW TO MEASURE

---



### CHEST

Measure under the arm and around the fullest part of the chest with arms down, keeping tape horizontal.

## COLORS

---



Black  
PMS BLACK  
C



Cool Grey  
PMS 424C



Game Royal  
PMS 7686C



Navy  
PMS 533C